



2009-10 INSTITUTIONAL PROFILE

**Degrees Conferred
July 1, 2008 – June 30, 2009**

Degrees Conferred 2008-09 Highlights

From July 1, 2008 to June 30, 2009, Goodwin College conferred 112 certificates and 219 associate degrees. The total of 331 represents a 52% increase over 2007-08 and surpasses that previous high of 218.

- The 112 certificates awarded is twice the number awarded in 2007-08 and the highest since 2004-05.
- The number of associate degrees awarded increased by 34% over last year and was the highest since 2004-05.
- More males received certificates and degrees in 2008-09 than in 2007-08 and also increased their respective percentages among all awards. Female students also received more degrees and certificates than last year, but their overall percentages declined slightly.
- The number of certificates and degrees awarded to African-American students doubled from last year; certificates awarded to Hispanic students doubled while the number of degrees declined slightly. Overall, students of color received 39% of the degrees and certificates compared to a 47% representation in the student body.
- 85% of the awards (80% in 2007-08) were in Health Professions and Related Clinical Sciences programs, with the most awarded in Nursing (40%, 52% in 2007-08). Even though the number of Nursing degrees is higher than last year, more awards were also evident in other health programs. 82% of Goodwin's students are enrolled in these programs.

Degrees Conferred by Program and Degree Level

Goodwin College

2008-2009

Program/CIP Classification	Degree Level			Total
	Certificate	Associate	Baccaluareate	
Program/CIP Classification	112	219	0	331
Computer Science (11.0000)				1
Computer Systems Technology	0	1	0	1
Environmental Studies				0
Environmental Studies	0	0	0	0
Family and Consumer Sciences (19.0000)				13
Early Childhood Education	2	9	0	11
Child Development Associate	2	0	0	2
Child Studies	0	0	0	0
General Studies				0
General Studies	0	0	0	0
Security and Protective Services (43.0000)				11
Criminal Justice	0	0	0	0
Homeland Security	0	11	0	11
Social Service Professions (44.0000)				9
Human Services	0	9	0	9
Youth Development	0	0	0	0
Health Professions and Related Clinical Sciences (51.0000)				280
Healthcare Assistant	61	0	0	61
Health Sciences	0	16	0	16
Histotechnician	4	0	0	4
Medical Assisting	3	9	0	12
Medical Billing and Coding	3	0	0	3
Medical Office	0	0	0	0
Nursing	0	131	0	131
Paramedic	10	0	0	10
Phlebotomy	21	0	0	21
Respiratory Care	0	22	0	22
Business, Management (52.0000)				17
Business Studies	0	11	0	11
Customer Service	6	0	0	6
Office Technology	0	0	0	0
Applied Org Skills--Bus/Hlthcare	0	0	0	0
Entrepreneurship	0	0	0	0

Degrees Awarded by Program and Level

Goodwin College

2004-05 through 2008-09*

	2004-05	2005-06	2006-07	2007-08	2008-09
CERTIFICATE					
Youth Practice	n/a	7	11	1	0
CDA Credential Program	n/a	n/a	5	8	2
Early Childhood Education	n/a	1	0	1	2
Medical Office	1	1	1	2	0
Medical Billing and Coding	n/a	11	6	6	3
Healthcare Assistant				new program	61
Healthcare Support	54	22	n/a		
EMT-Paramedic				5	10
Phlebotomy and Laboratory Svcs				13	21
Patient Care Associate	17	terminated program			
Office Technology/Administrator	1	1	1	1	0
Customer Service				8	6
Entrepreneurship				9	0
Computer Systems Technology	2	terminated program			
Youth Development	n/a	0	0	0	0
Medical Assisting	4	3	2	1	3
Histotechnician	n/a	n/a	5	0	4
TOTAL	79	46	31	55	112
ASSOCIATE DEGREE					
Computer Systems Technology	19	15	5	0	1
Early Childhood Education	n/a	n/a	1	6	9
Human Services	0	0	4	1	9
Homeland Security			new program	3	11
Medical Assisting	28	19	11	5	9
Respiratory Care			new program	17	22
Nursing	n/a	108	124	113	131
Health Sciences**	n/a	n/a	1	13	16
Business Administration***	15	20	8	5	11
TOTAL	62	162	154	163	219
GRAND TOTAL	141	208	185	218	331

*July 1 - June 30

**includes medical billing option

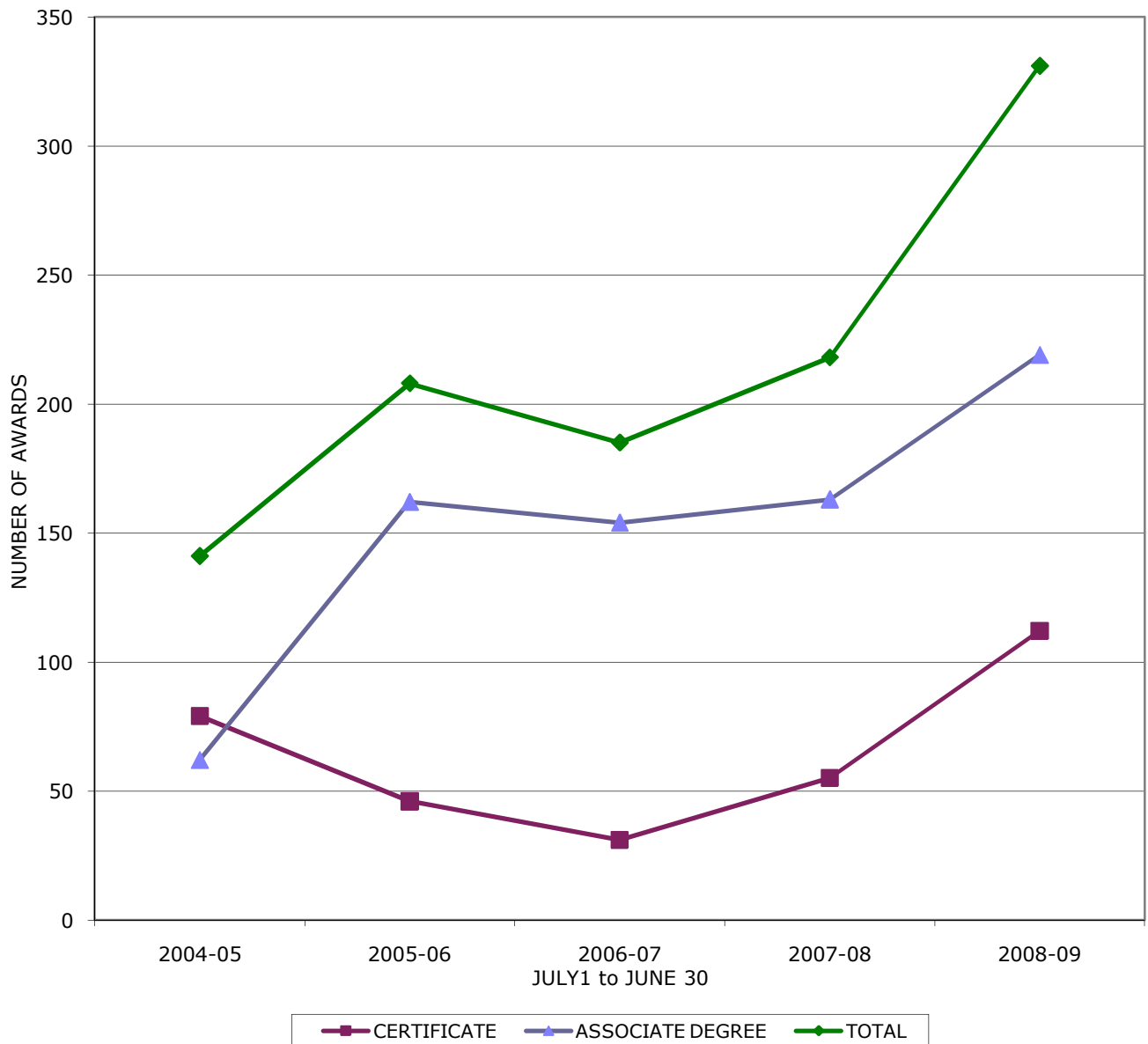
***includes medical office mgmt option

Degrees Awarded by Level

Goodwin College

2004-05 through 2008-09*

	2004-05	2005-06	2006-07	2007-08	2008-09
CERTIFICATE	79	46	31	55	112
ASSOCIATE DEGREE	62	162	154	163	219
TOTAL	141	208	185	218	331



*July 1 - June 30

Degrees Awarded by Gender and Level

Goodwin College

2004-05 through 2008-09*

2004-05 2005-06 2006-07 2007-08 2008-09

CERTIFICATE

Female	67	41	24	47	91
Male	12	5	7	8	21
Total	79	46	31	55	112

ASSOCIATE DEGREE

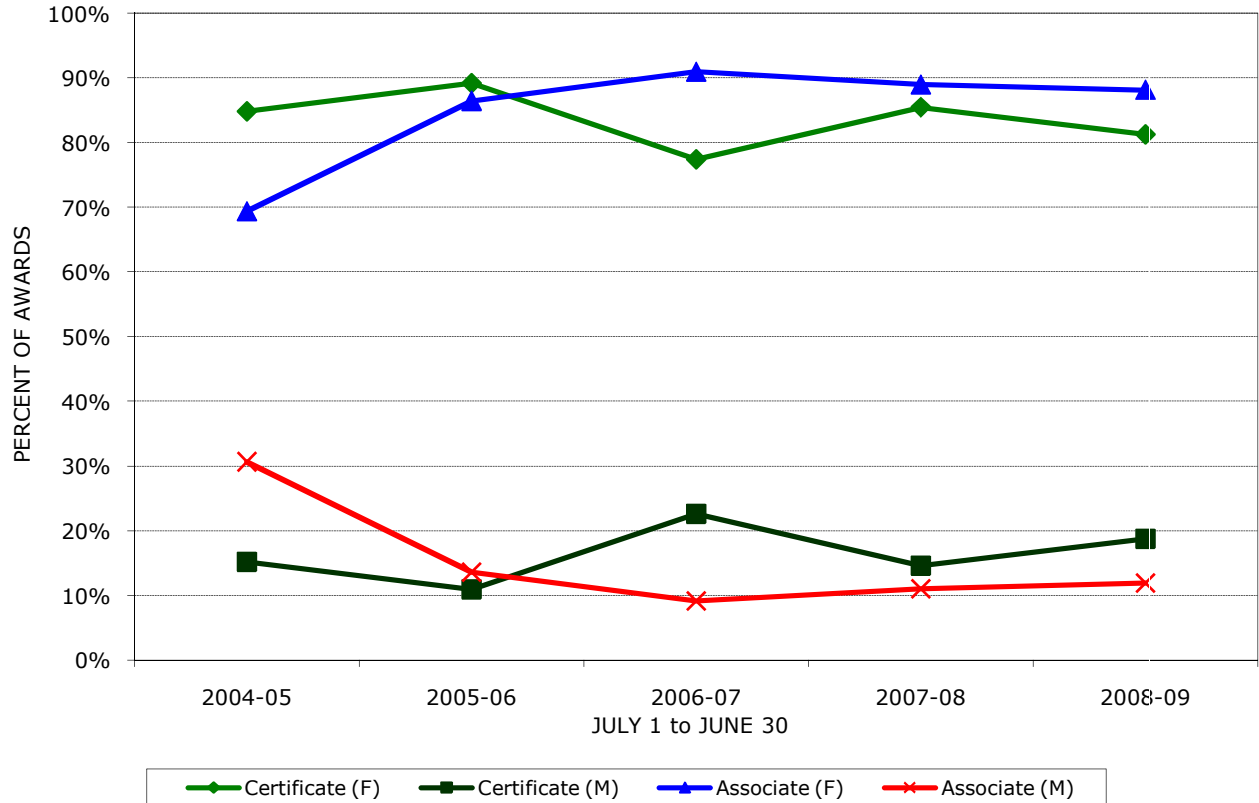
Female	43	140	140	145	193
Male	19	22	14	18	26
Total	62	162	154	163	219

CERTIFICATE

Female	84.8%	89.1%	77.4%	85.5%	81.3%
Male	15.2%	10.9%	22.6%	14.5%	18.8%

ASSOCIATE DEGREE

Female	69.4%	86.4%	90.9%	89.0%	88.1%
Male	30.6%	13.6%	9.1%	11.0%	11.9%



*July 1 - June 30

Degrees Awarded by Ethnicity and Level

Goodwin College

2004-05 through 2008-09*

	2004-05	2005-06	2006-07	2007-08	2008-09
CERTIFICATE					
Foreign Nationals	0	0	0	1	0
African-American	14	8	11	17	38
American Indian	1	0	0	2	0
Asian-American	3	1	1	4	2
Hispanic	10	2	7	6	11
White	47	29	9	25	56
Unknown	4	6	3	0	5
Total	79	46	31	55	112
ASSOCIATE DEGREE					
Foreign Nationals	0	0	0	0	0
African-American	16	34	32	39	57
American Indian	1	2	1	1	0
Asian-American	4	4	3	3	5
Hispanic	13	14	13	19	15
White	22	100	100	97	138
Unknown	6	8	5	4	4
Total	62	162	154	163	219
CERTIFICATE					
Foreign Nationals	0.0%	0.0%	0.0%	1.8%	0.0%
African-American	17.7%	17.4%	35.5%	30.9%	33.9%
American Indian	1.3%	0.0%	0.0%	3.6%	0.0%
Asian-American	3.8%	2.2%	3.2%	7.3%	1.8%
Hispanic	12.7%	4.3%	22.6%	10.9%	9.8%
White	59.5%	63.0%	29.0%	45.5%	50.0%
Unknown	5.1%	13.0%	9.7%	0.0%	4.5%
ASSOCIATE DEGREE					
Foreign Nationals	0.0%	0.0%	0.0%	0.0%	0.0%
African-American	25.8%	21.0%	20.8%	23.9%	26.0%
American Indian	1.6%	1.2%	0.6%	0.6%	0.0%
Asian-American	6.5%	2.5%	1.9%	1.8%	2.3%
Hispanic	21.0%	8.6%	8.4%	11.7%	6.8%
White	35.5%	61.7%	64.9%	59.5%	63.0%
Unknown	9.7%	4.9%	3.2%	2.5%	1.8%

*July 1 - June 30