



2009-10 INSTITUTIONAL PROFILE

Human Resources

Human Resources Highlights

As of November 1, there were 149 full-time and 161 part-time faculty and staff at Goodwin College, and increase of 85% since 2005.

The number of full-time employees increased by 96% since 2005, with the greatest growth coming in the following areas:

- Technical/Paraprofessional +700%
- Other Professional +133%
- Faculty +100%

The number of part-time employees increased by 75% over that same time period.

Almost half of the full-time staff (47%) has been at Goodwin College three years or less; one in six has been at the college more than 10 years:

- Faculty—32% <3 years; 7% > 10 years
- Staff—70% < 3 years; 20% > 10 years

The number of full-time faculty doubled since 2005; the number of part-time faculty increased by 78%.

FTE student to FTE faculty ratio is 12:1

29% of Goodwin's full-time staff are instructional faculty

43% of Goodwin's full-time staff are administrative or professional non-faculty.

Among full-time staff (excludes faculty):

- 59% are female
- 32% are people of color

Among full-time instructional faculty

- 70% of instructional faculty are female (cf. 85% of the student body)
- 9% are people of color (cf. 47% of students)

Among part-time faculty:

- 62% are female
- 19% of instructional faculty are people of color.

16% of the full-time faculty hold doctoral or first professional degrees

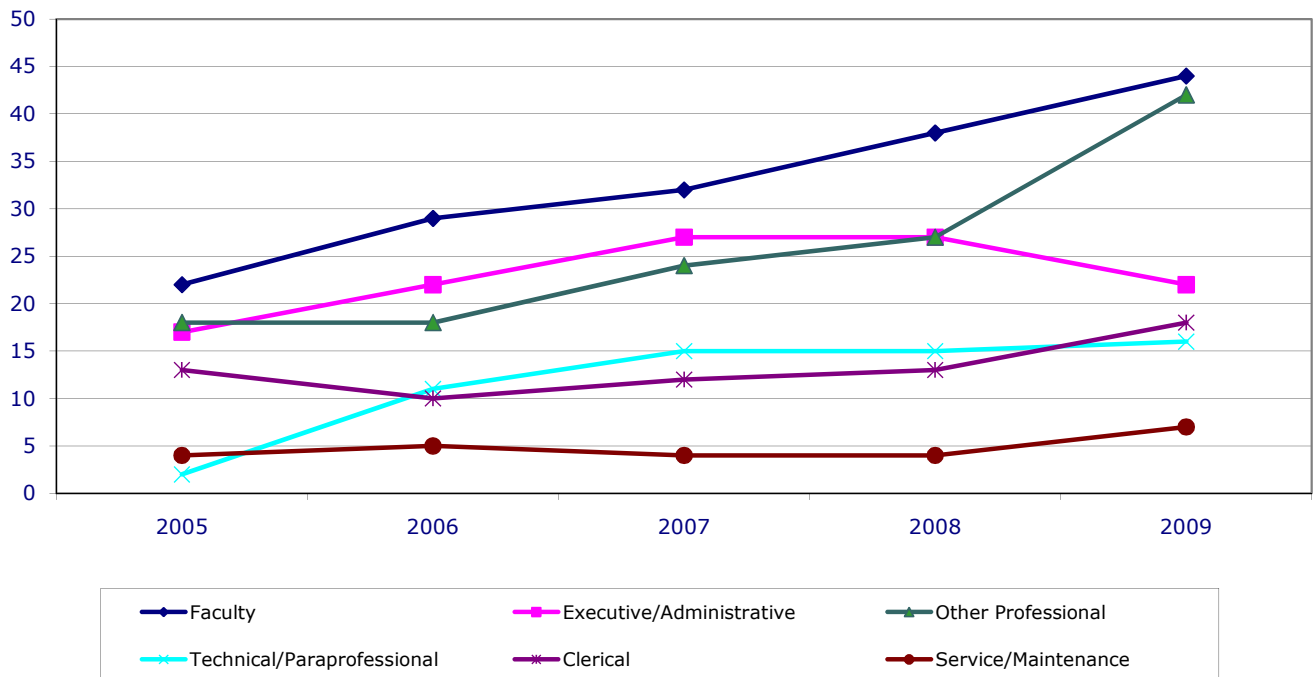
Employees by Assigned Position

Goodwin College

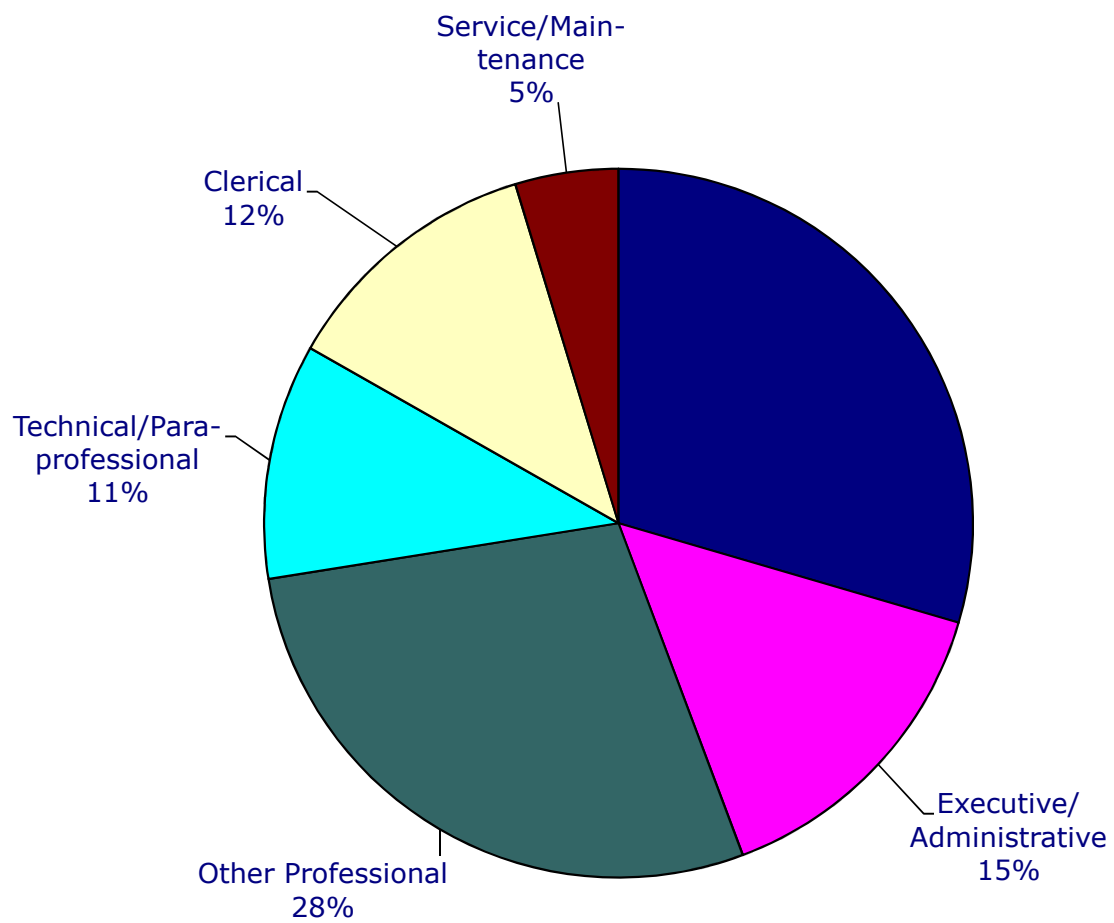
November 1

	2005	2006	2007	2008	2009	5-yr Change
FULL-TIME						
Faculty	22	29	32	38	44	100%
Executive/Administrative	17	22	27	27	22	29%
Other Professional	18	18	24	27	42	133%
Technical/Paraprofessional	2	11	15	15	16	700%
Clerical	13	10	12	13	18	38%
Service/Maintenance	4	5	4	4	7	75%
Total FT	76	95	114	124	149	96%
PART-TIME						
Faculty	76	80	106	108	135	78%
Executive/Administrative	0	0	1	1	1	#DIV/0!
Other Professional	10	9	9	8	9	-10%
Technical/Paraprofessional	2	3	6	5	7	250%
Clerical	3	3	3	3	5	67%
Service/Maintenance	1	1	1	2	4	300%
Total PT	92	96	126	127	161	75%
GRAND TOTAL	168	191	240	251	310	85%

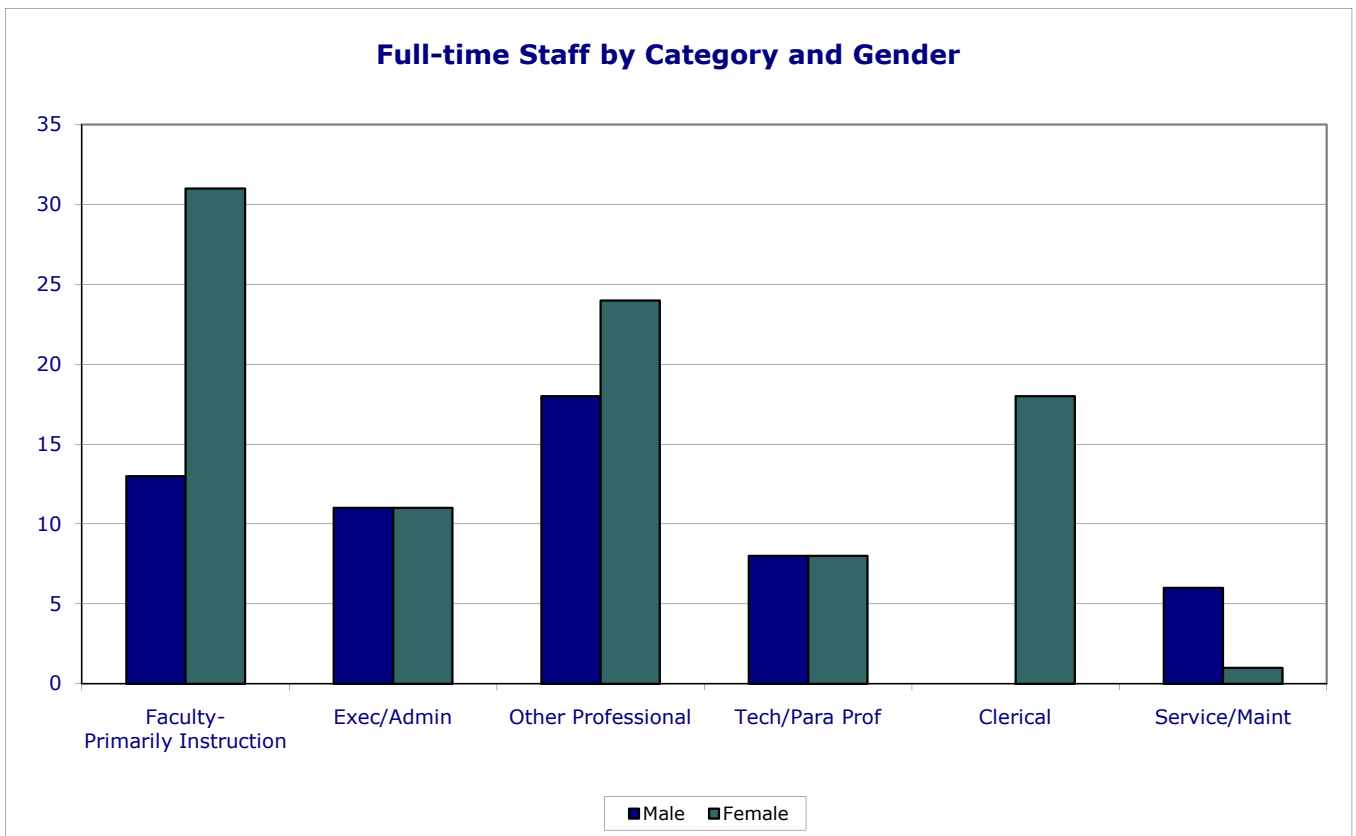
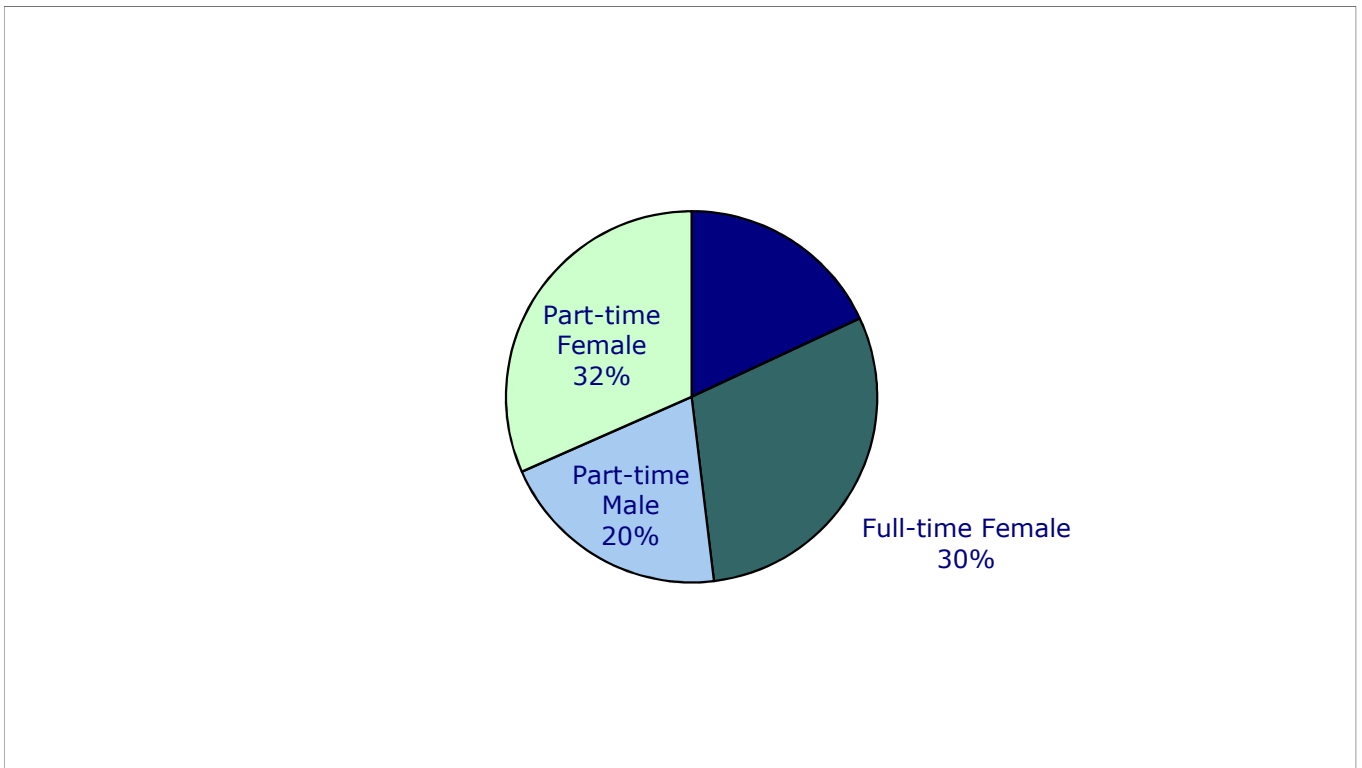
FTE STUDENTS/FTE FACULTY* 10.4 10.0 9.1 10.1 11.7
 *FTE=(FT+PT/3)



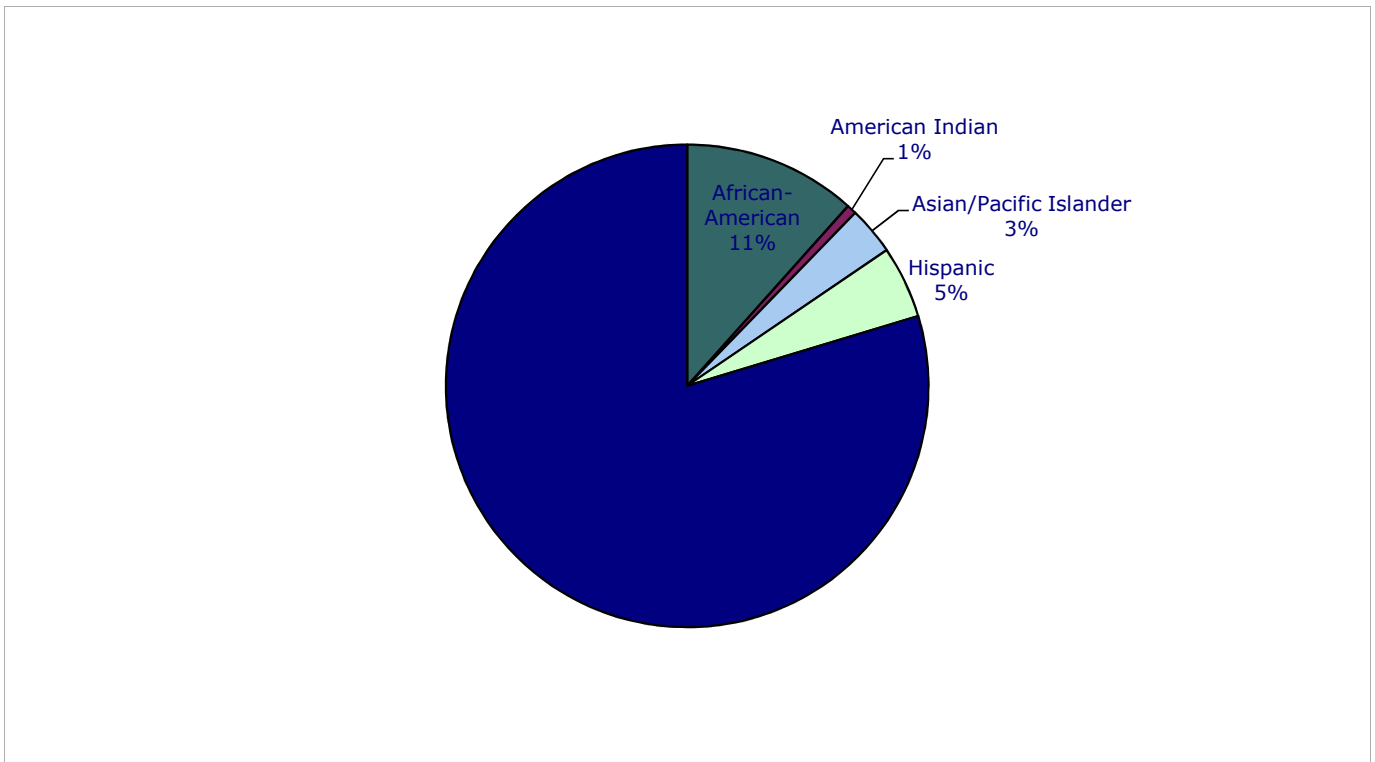
Full-time Employees by Assigned Position



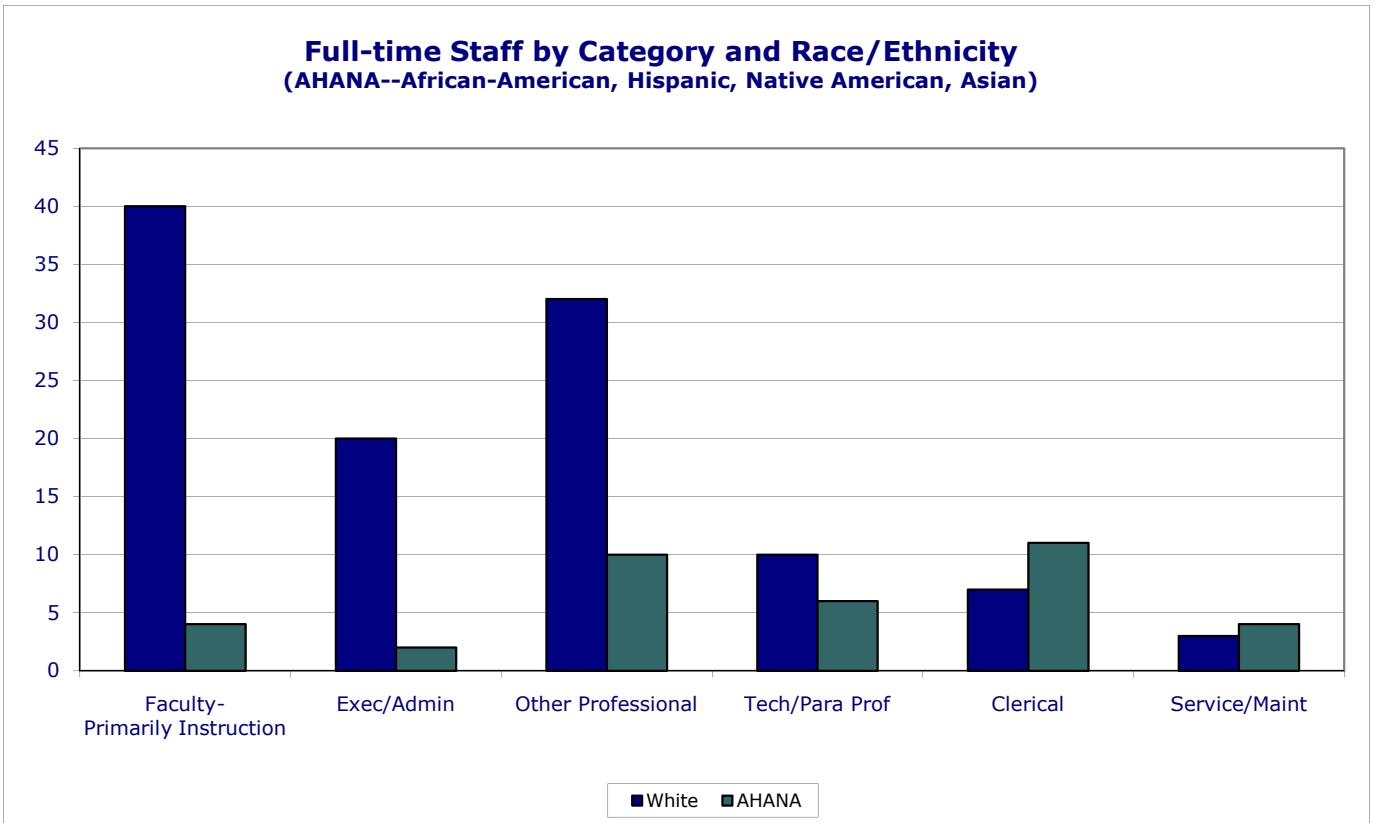
Employees by Gender



Employees by Race/Ethnicity

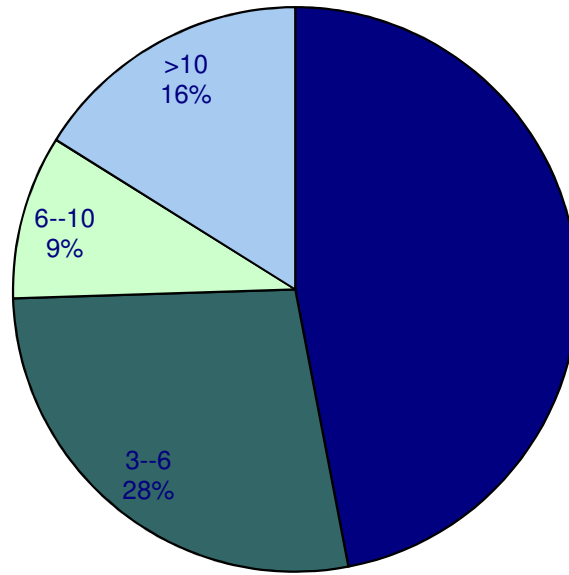


Full-time Staff by Category and Race/Ethnicity
(AHANA--African-American, Hispanic, Native American, Asian)

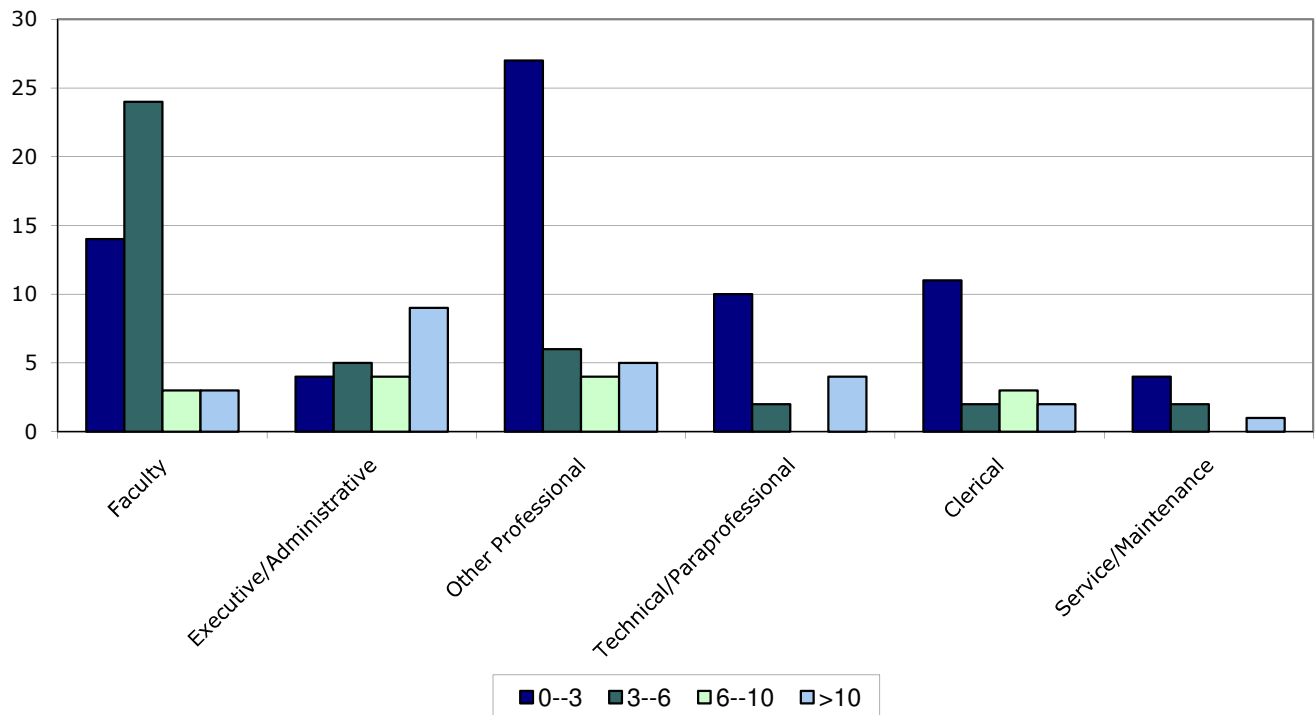


Full-time Employees by Longevity

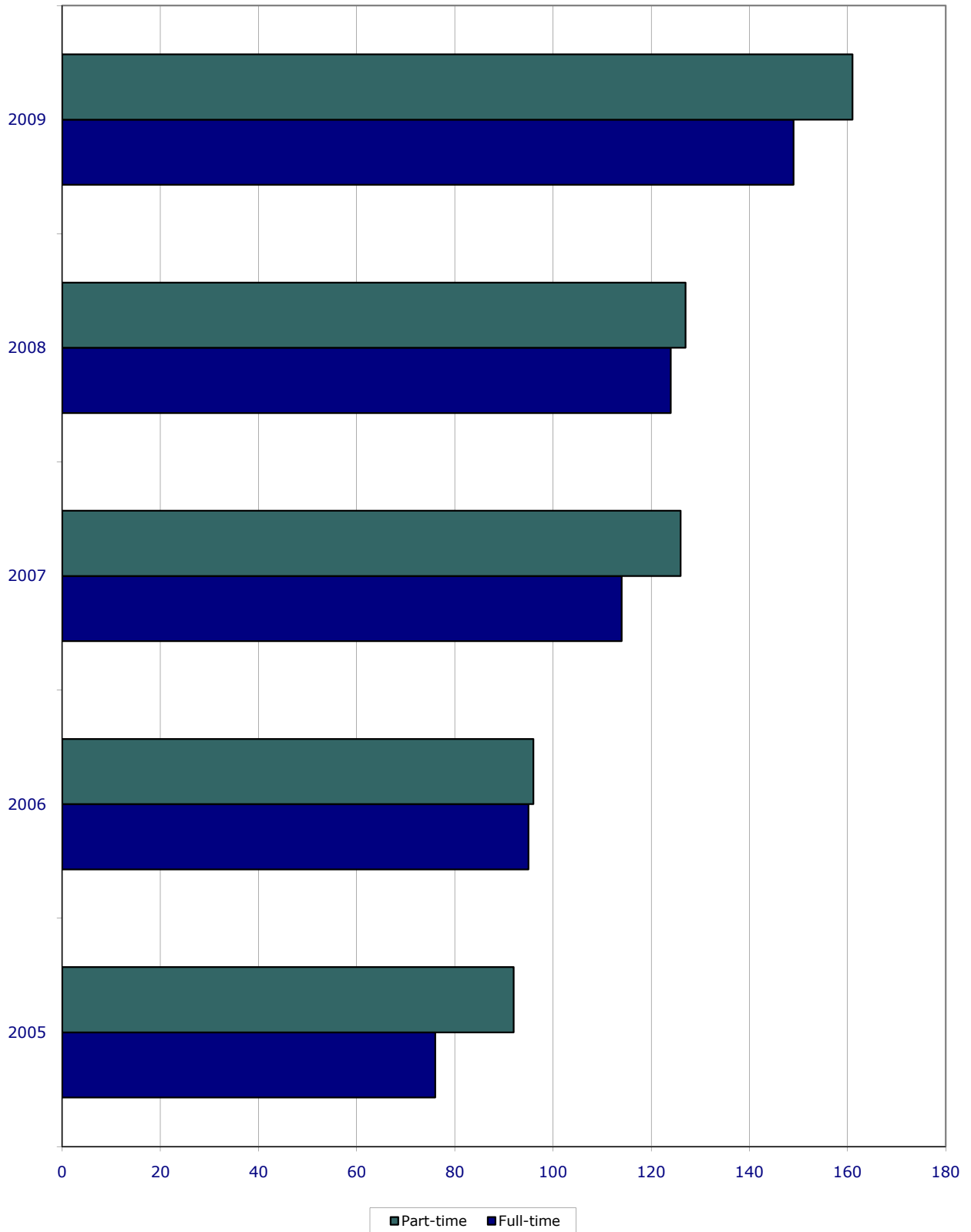
Longevity at Goodwin College in Years



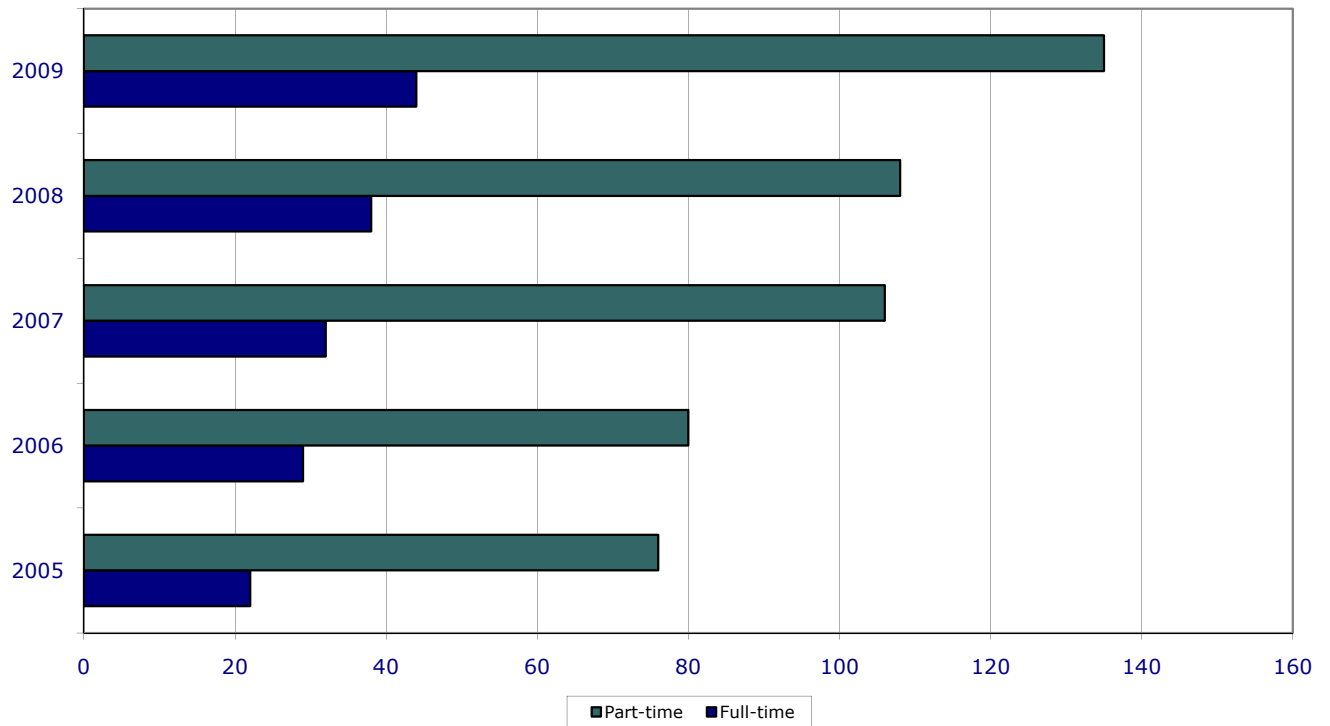
Full-time Employees by Category and Longevity



Employees by Status

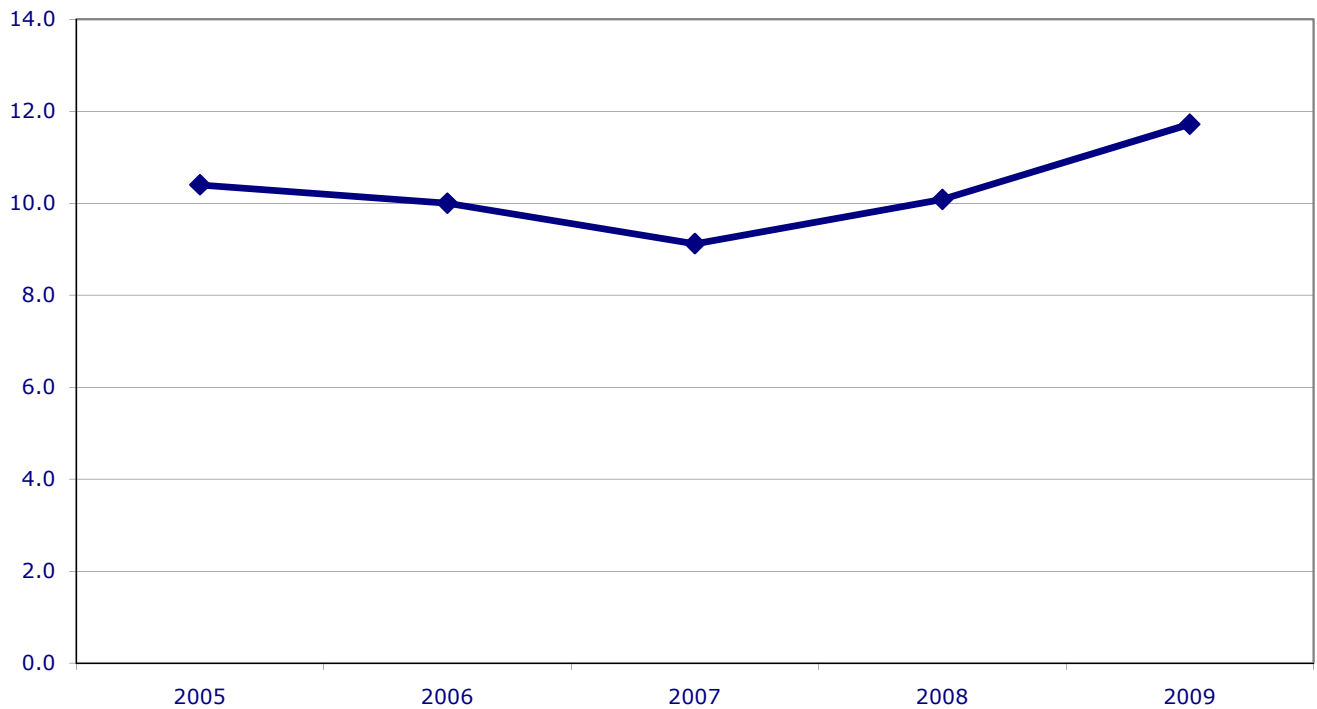


Faculty by Status



FTE STUDENTS/FTE FACULTY*

*FTE=(FT+PT/3)



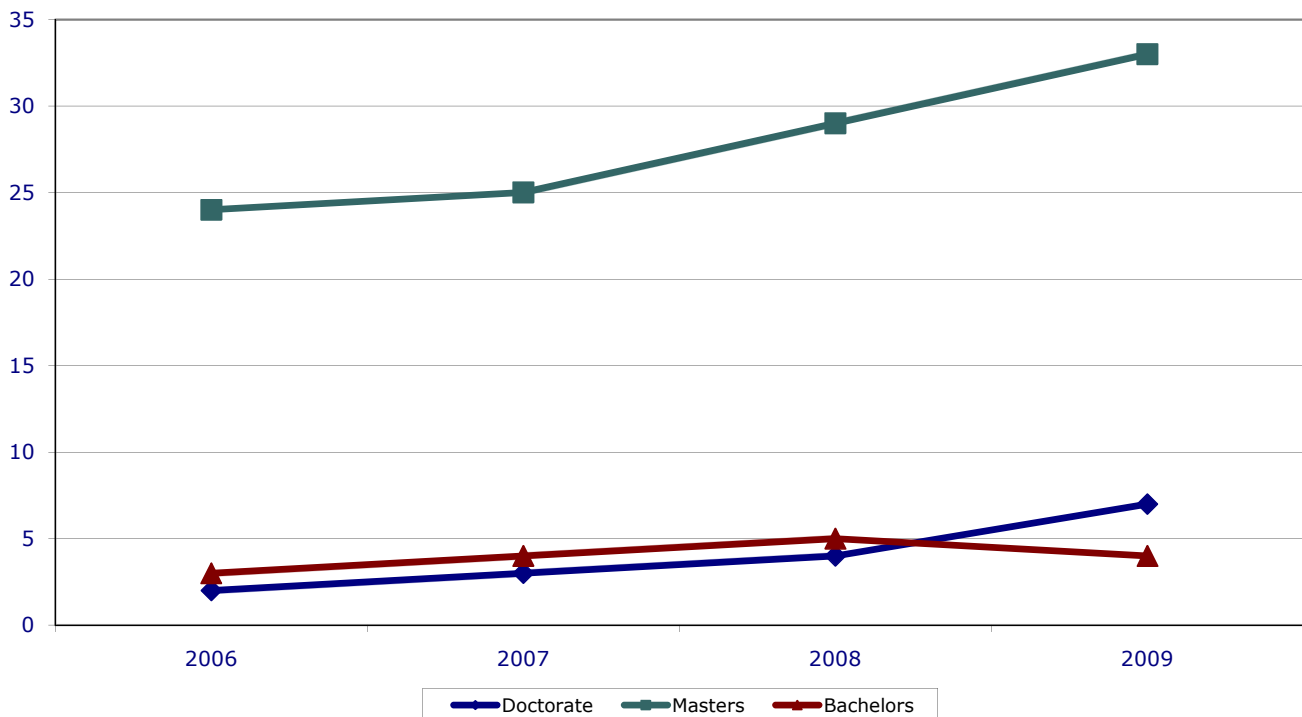
Faculty: Highest Degree Earned by Rank and Status

Goodwin College

November 1

	2006		2007		2008		2009		
	FT	PT	FT	PT	FT	PT	FT	PT	
Doctorate									
Professor						-	-	-	
Associate					1	0	3	0	
Assistant	2		3		3	0	4	0	
Instructor		9		18		18	0	25	
Other						0	0	0	
Total	2	9	3	18	4	18	7	25	
Masters									
Professor					0	0	0	0	
Associate	2		2		6	0	11	0	
Assistant	19	1	19		21	0	20	0	
Instructor	3	62	4	76	2	100	2	99	
Other						0	0	0	
Total	24	63	25	76	29	100	33	99	
Bachelors									
Professor					0	0	0	0	
Associate					0	0	0	0	
Assistant	1		1		1	0	2	0	
Instructor	2	9	2	12	3	10	2	11	
Other			1		1	0	0	0	
Total	3	9	4	12	5	10	4	11	

Full-time Faculty by Highest Degree Earned



Employees by Assigned Position

Goodwin College

November 1, 2009

Category: Full-time	Non Res. Alien		Black		Amer. Indian		Asian		Hispanic		White		Unknown		Grand Total		
	Male	Female	Male	Female	Male	Female	Male	Female	Male	Female	Male	Female	Male	Female	Male	Female	All FT
Faculty-Primarily Instruction	0	0	0	0	0	0	0	3	1	0	12	28	0	0	13	31	44
Exec/Admin	0	0	1	1	0	0	0	0	0	0	10	10	0	0	11	11	22
Other Professional	0	0	2	4	0	1	0	2	1	0	15	17	0	0	18	24	42
Tech/Para Prof	0	0	1	3	0	0	0	0	1	1	6	4	0	0	8	8	16
Clerical	0	0	0	9	0	0	0	0	0	2	0	7	0	0	0	18	18
Service/Maint	0	0	1	0	0	0	0	0	2	1	3	0	0	0	6	1	7
Total	0	0	5	17	0	1	0	5	5	4	46	66	0	0	56	93	149

Category: Part-time	Non Res. Alien		Black		Amer. Indian		Asian		Hispanic		White		Unknown		Grand Total		
	Male	Female	Male	Female	Male	Female	Male	Female	Male	Female	Male	Female	Male	Female	Male	Female	All PT
Faculty-Primarily Instruction			5	7		1	1	4	1	3	44	69			51	84	135
Exec/Admin											1				1	0	1
Other Professional			1						1		2	5			4	5	9
Tech/Para Prof											2	5			2	5	7
Clerical				1							2	2			2	3	5
Service/Maint									1	3					3	1	4
Total	0	0	6	8	0	1	1	4	2	4	54	81	0	0	63	98	161

	2006	2007	2008	2009
Doctorate	2	3	4	7
Masters	24	25	29	33
Bachelors	3	4	5	4

	Male	Female
Full-time M	56	
Full-time F	93	
Part-time M	63	
Part-time F	98	

	Male	Female						
Faculty-Primarily Instruction	13	31						
Exec/Adm	11	11						
Other Pro	18	24						
Tech/Para	8	8	0	17	0	1	0	
Clerical	0	18						
Service/M	6	1	Non Res.	African-A	American	Asian/Pac	Hispanic	White
			0	36	2	10	15	247

	African-A	American	Asian/Pac	Hispanic	White	AHANA	
Faculty-Primarily Instruction	0		3	1	40	4	27%
Exec/Adm	2		0	0	20	2	13%
Other Pro	6	1	2	1	32	10	21%
Tech/Para	4			2	10	6	7%
Clerical	9			2	7	11	5%
Service/M	1			3	3	4	2%
							149

Longevity

	0--3	3--6	6--10	>10	
Faculty	14	24	3	3	44
Executive	4	5	4	9	22
Other Pro	27	6	4	5	42
Technical,	10	2	0	4	16
Clerical	11	2	3	2	18
Service/M	4	2	0	1	7
	70	41	14	24	149

5

5



4

46



66

0

0

56

93



