

A **Virtual Private Network (VPN)** allows valid remote users to become part of a central network. The Goodwin VPN gives you access off campus to the catalog and the subscription databases you need for research just as if you were sitting here in the library.

What You Need

- Students must have access to a Personal Computer connected to the Internet
The Internet connection can be either Dial-up or Hi-speed.
- Students must possess a valid ID and a Current Password
Each Student will be issued a ID and Password.

Student ID's

The Student ID is composed of:

1. The First Initial of your First Name
 2. Your complete Last Name
- For Example: "Alex Goodwin" would be
"AGoodwin"

Student Password

The Student Password is composed of:

1. Your Student ID number
- For Example: 123456

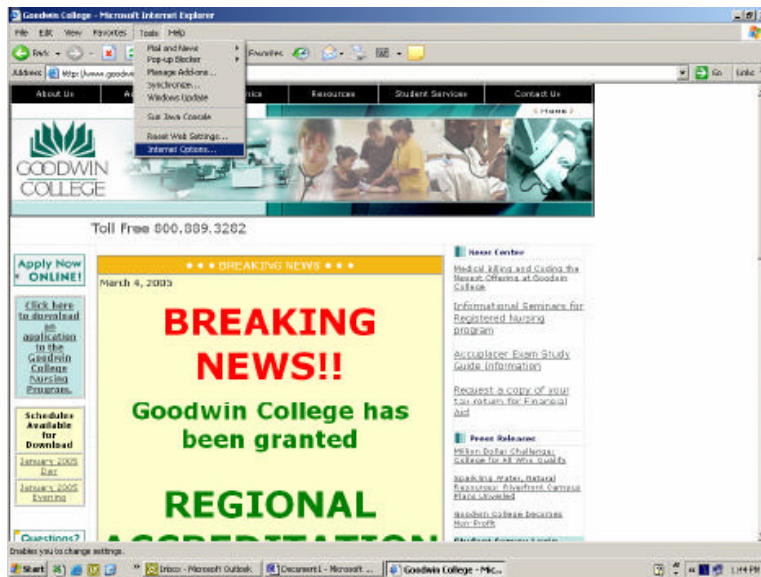
Students must create a Virtual Private Network (VPN) connection with the college.

Follow the instructions below to setup your home computer for a VPN connection. Help is always available by calling the Goodwin College Help Desk at (860) 528 - 4111

Establishing the VPN connection

1. Open Internet Explorer.
 - a. From the text menus, select “Tools” >> “Internet Options”, as shown in Figure 1a.
Figure 1a The Internet Explorer open showing the Tools drop down menu.

Figure 1a



- b. From the Internet Options Window, show in Figure 1b, select the “Connections” tab.

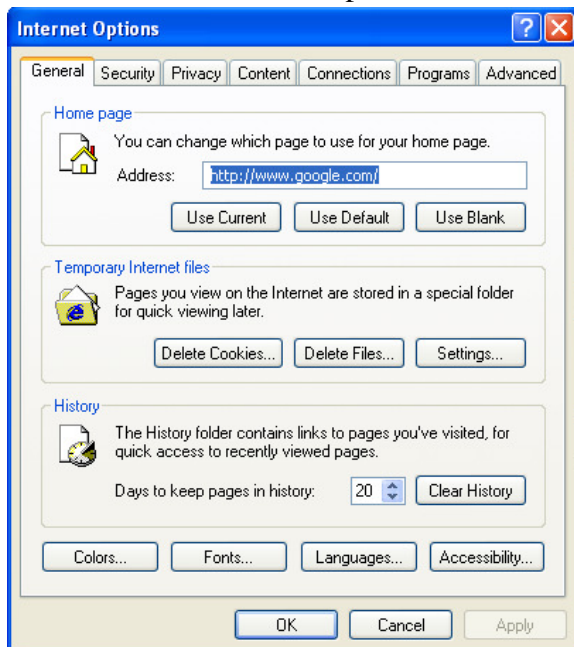


Figure 1b: Internet Options Window

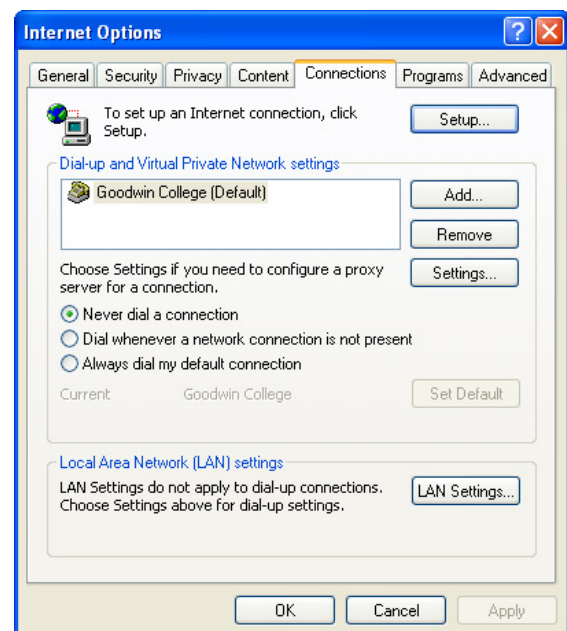
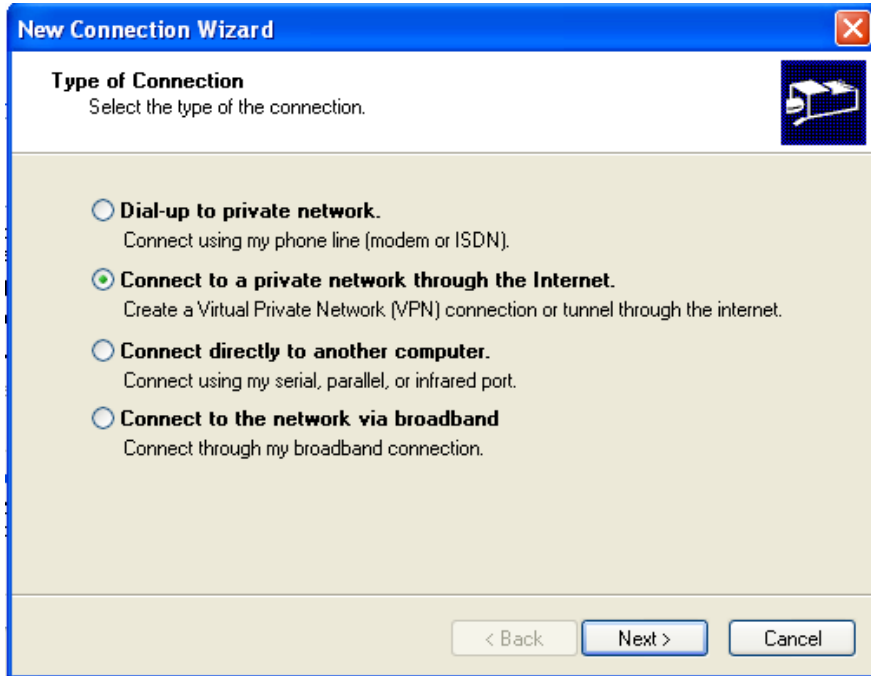


Figure 1c: Connections Tab Selected.

c. On the Connections Window tab, Figure 1c, choose “Add”

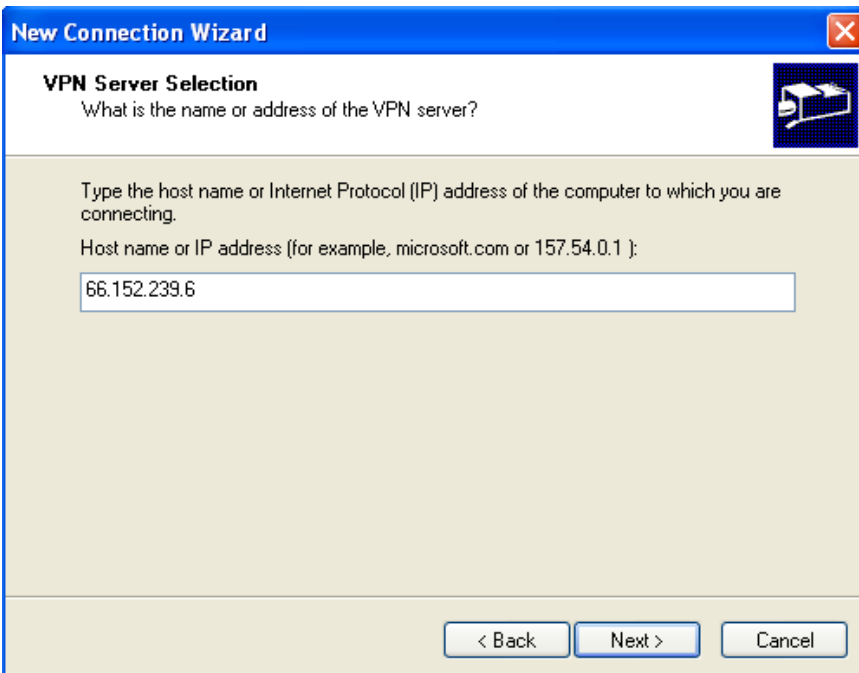
d. The New Connection Wizard opens. From the “Type of Connection” screen choose “Connect to a Private Network through the Internet” and press “Next”



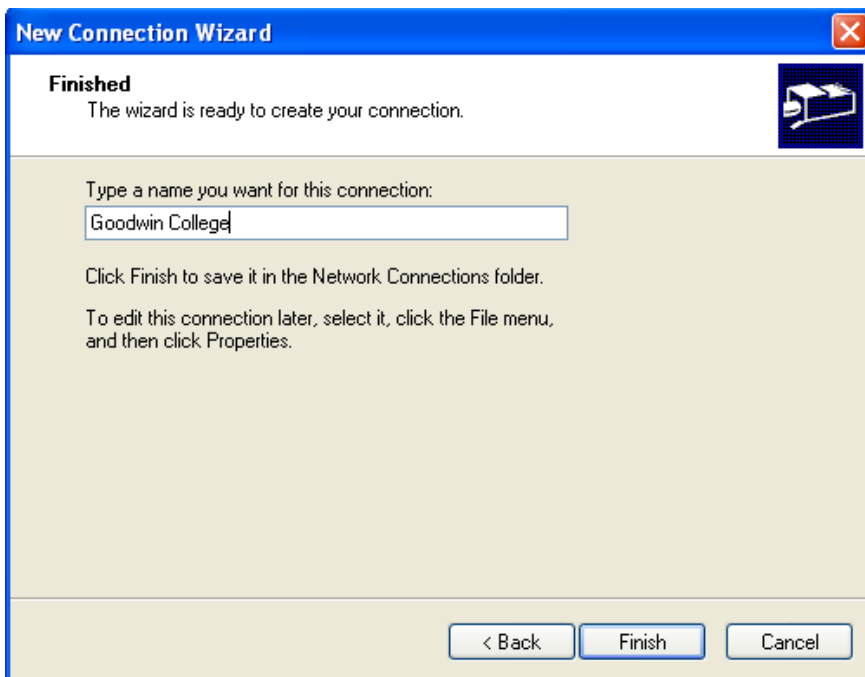
Select whether or not you need to dial to the Internet before establishing a VPN connection. Choose “Do not dial the initial connection.” Click on “Next.”



The “VPN Server Selection” window opens, Enter “**66.152.239.6**” and press “**Next**”



On the next screen, shown in Figure 1e, enter “**Goodwin College**”, and then click “**Finish**”



Make sure that you check the box , “**Add a shortcut to this connection to my desktop**”.



When you click on “**Finish**” it will take you back to the screen shown below. Click on “**Settings**”. Check the box “**Automatically detect settings**”.

Fill in the “**username**”, “**password**” and enter in “**Student**” in the “**Domain.**”

